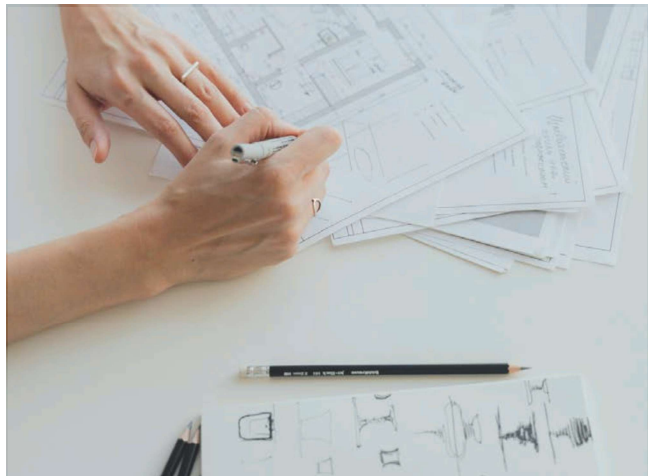
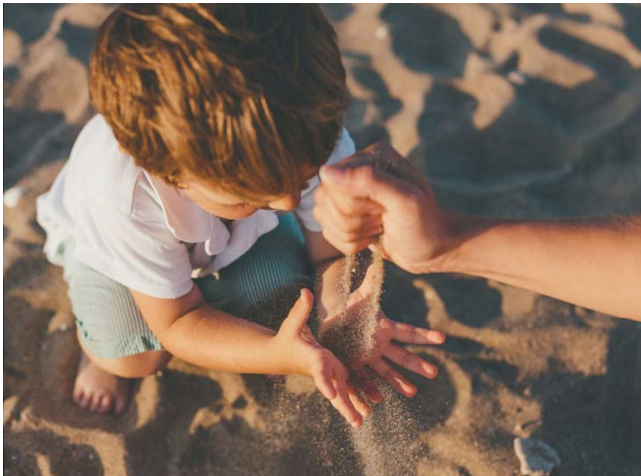
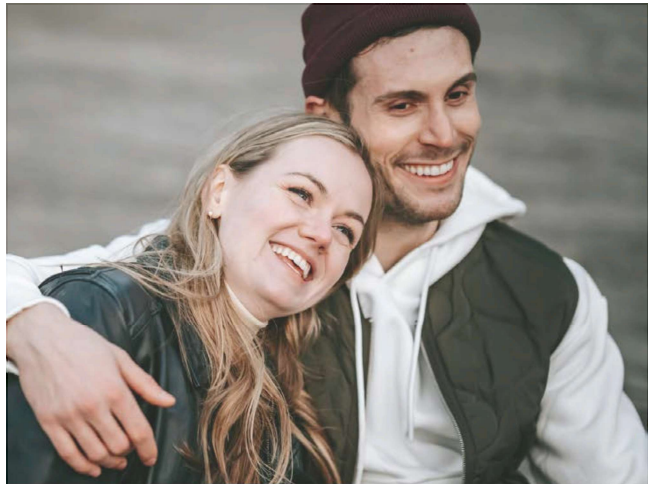


THE DOCKS

AT MOONEY'S BAY





The Docks at Mooney's Bay

Nature at your doorstep

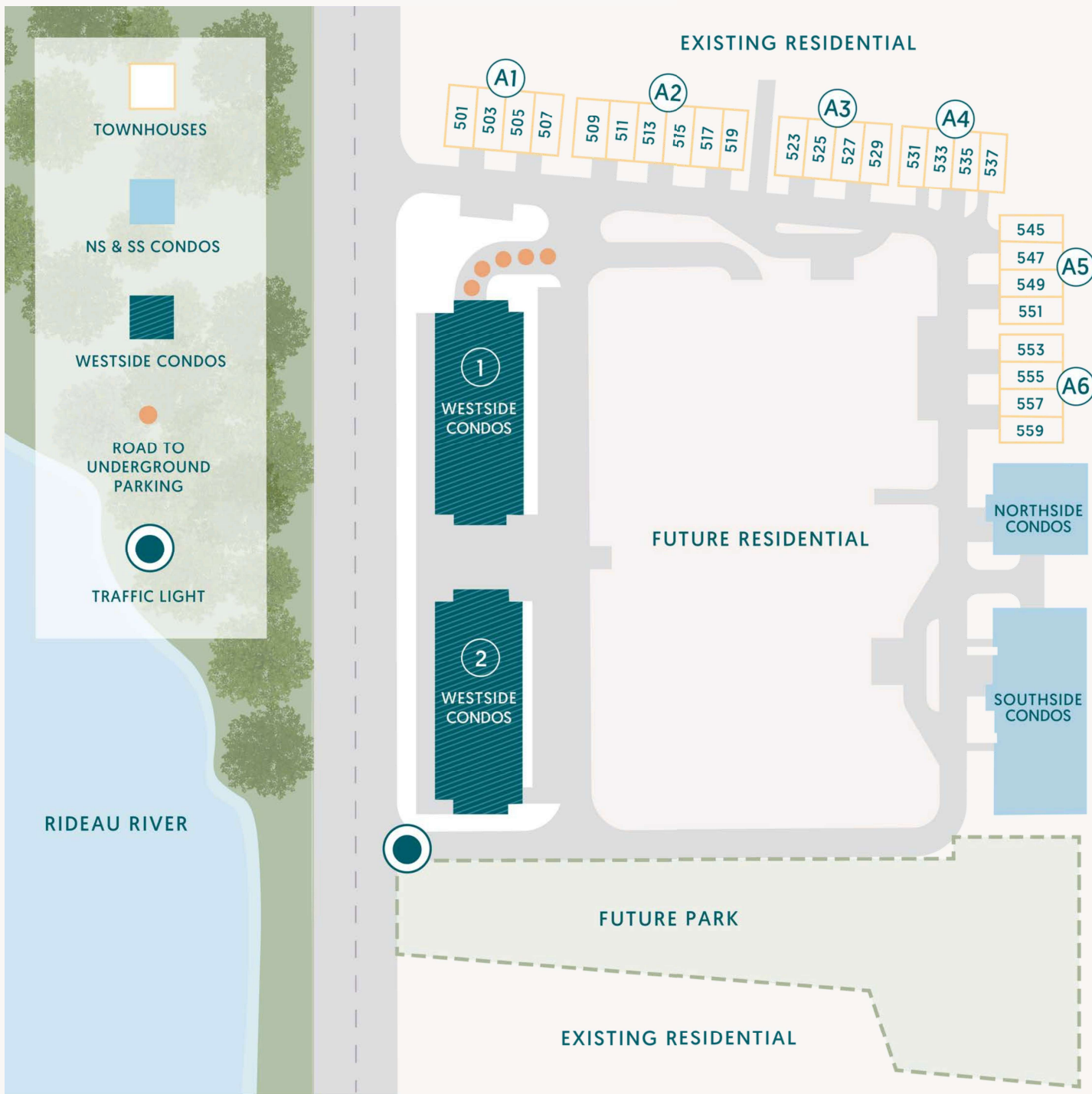
Nestled along the waterfront of Mooney's Bay, The Docks offers a rare blend of modern living and natural beauty.

Here, you'll enjoy the perfect balance of tranquility and urban convenience. Situated near downtown Ottawa, the Rideau Canal, and Carleton University, The Docks keeps you connected to city life while providing the peacefulness of a riverside retreat.

Outdoor enthusiasts will revel in the access to parks, beaches, and scenic trails just steps from their door. Whether it's kayaking, paddleboarding, or leisurely strolls along the water, the stunning outdoor spaces make it easy to unwind and reconnect with nature.

Designed with modern lifestyles in mind, The Docks features a range of contemporary condos and townhouses, each offering open-concept layouts, sleek finishes, and an abundance of natural light.

Living at The Docks means joining a community that offers it all.



The Docks at Mooney's Bay

Community Plan

Beside the Rideau, The Docks at Mooney's Bay is steps away from beautiful nature that lines the river. To add even more access to outdoor activities, The Docks has planned a park on the south side of our community.

On the west side of our community, there will be the Westside 1 and Westside 2 condo buildings. Mirrored but otherwise identical in look, they will each offer 34 units with a variety of 1 bedroom, 1 bedroom + den, and 2 bedroom options. Each building will have commercial opportunities on the ground floor.

Lining the north and part of the upper east side, are 26 townhouses, each with 3 bedrooms and 2.5 bathrooms.

On the east side of our community will be Northside and Southside Condo buildings. The Northside condo building offers 12 units, and the Southside building offers 30 units.



Westside Condos



Westside Condos One Bedroom

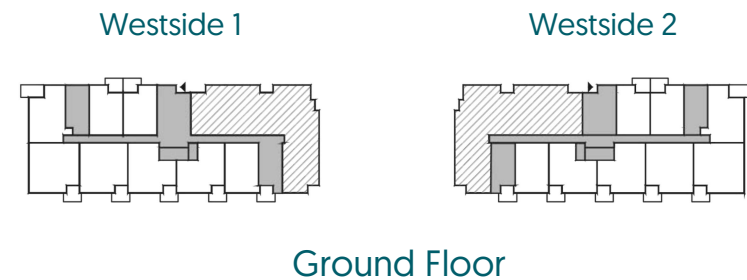
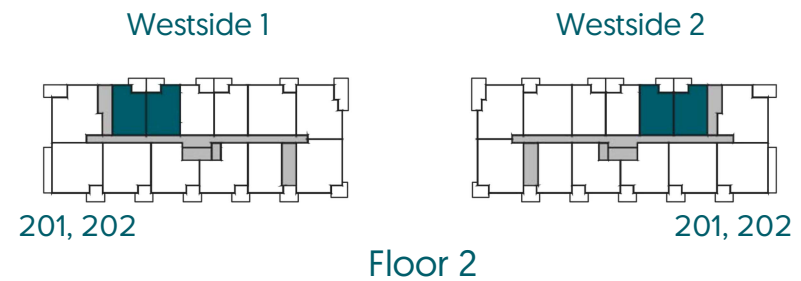
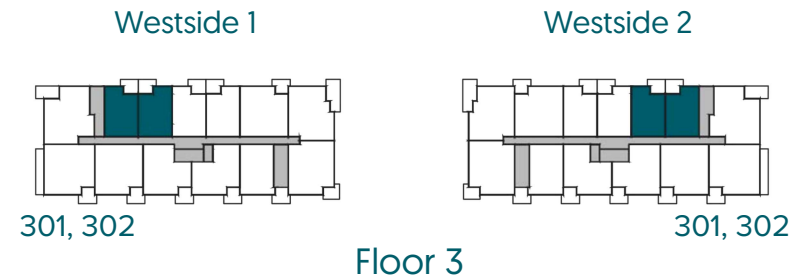
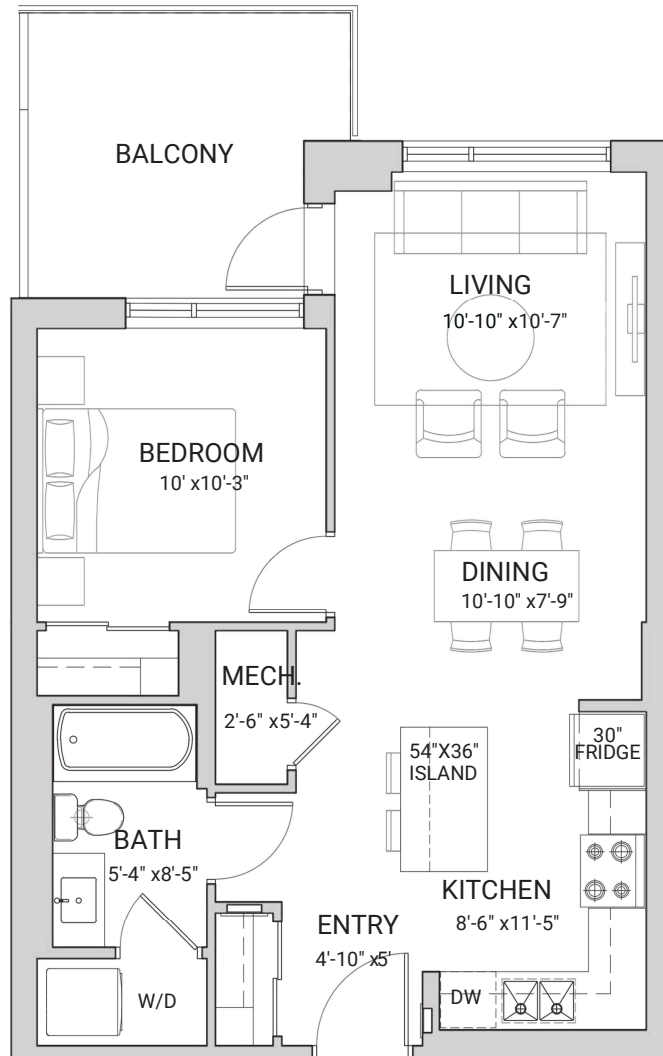


One Bedroom, One Bathroom

Riverside - A2

Area: 645 - 650 sqft.

Balcony: 103 sqft.



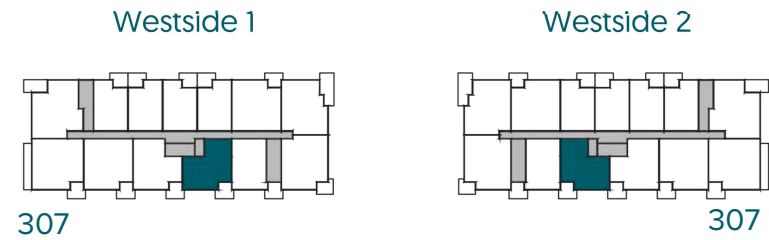
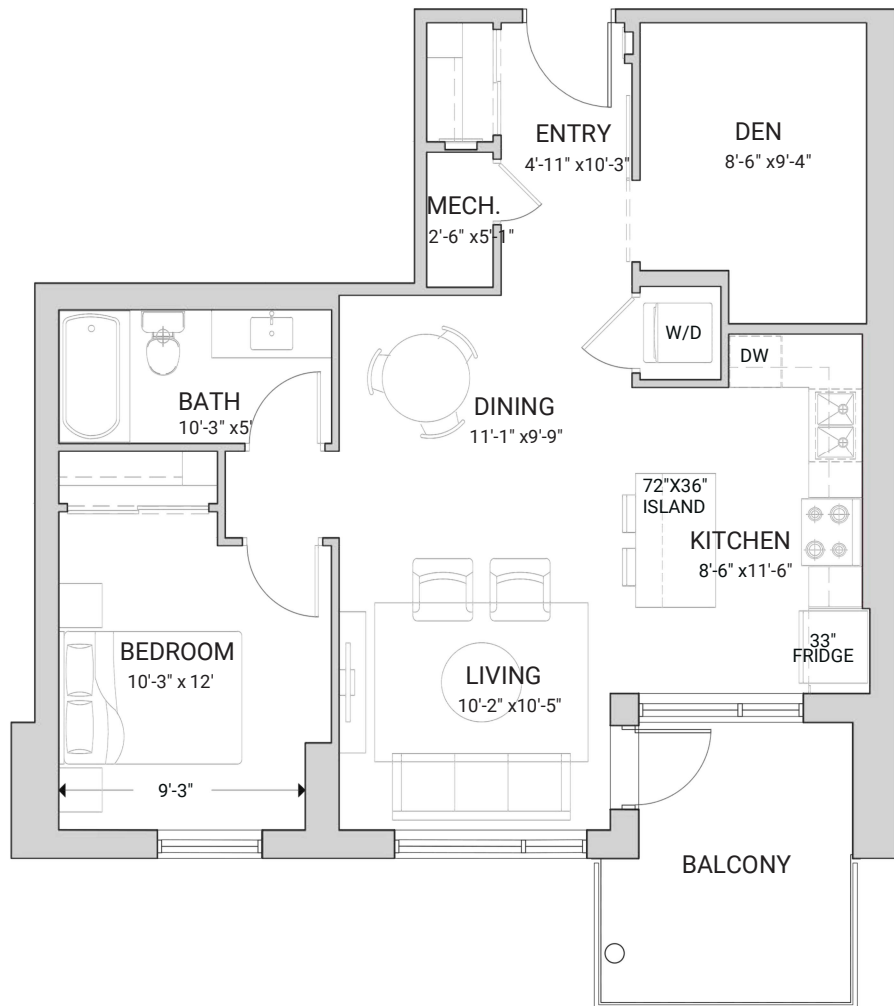
▼ Facing Riverside ▼

One Bedroom + Den, One Bathroom

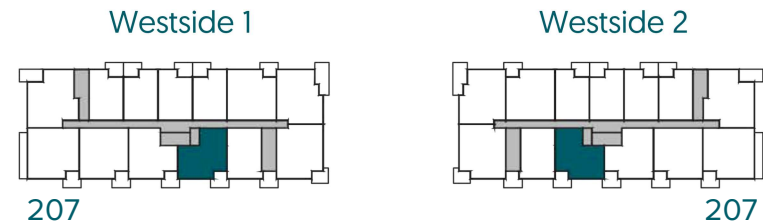
Splash - B2

Area: 821 sqft.

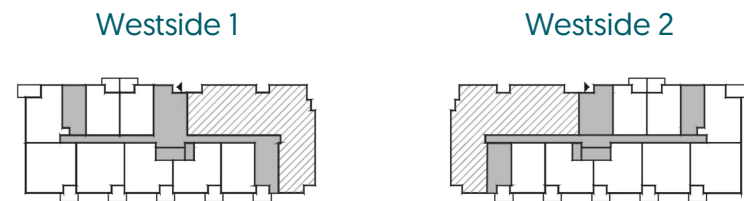
Balcony: 92 sqft.



Floor 3

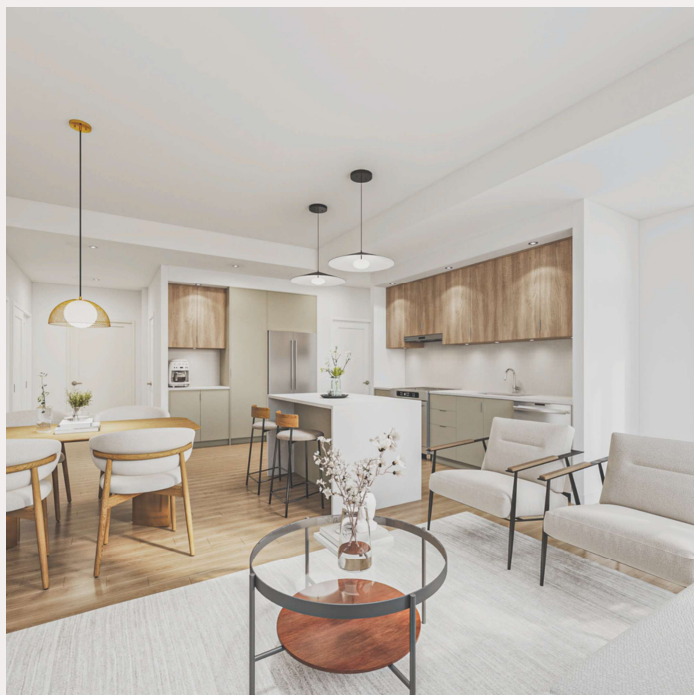


Floor 2



Ground Floor

▼ Facing Riverside ▼



Westside Condos Two Bedroom



Two Bedroom, Two Bathroom

Rideau - C

Area: 952 sqft.

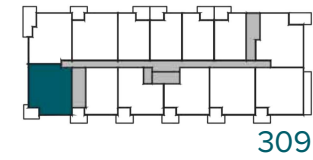
Balcony: 86 sqft.



Westside 1

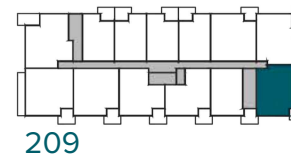


Westside 2

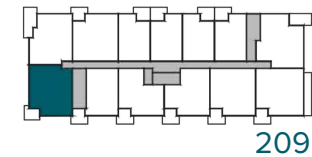


Floor 3

Westside 1

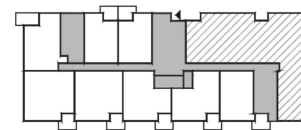


Westside 2

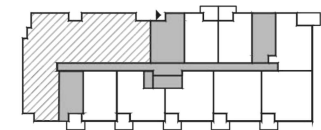


Floor 2

Westside 1



Westside 2



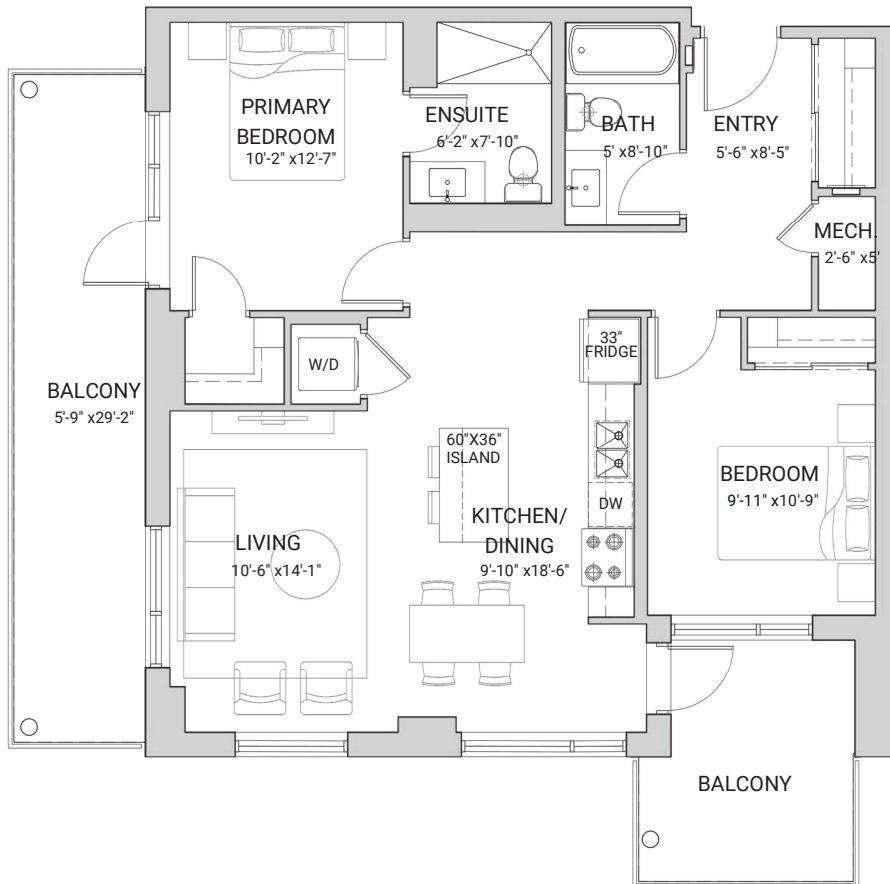
Ground Floor

◀ Facing Riverside ▶

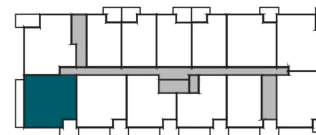
Two Bedroom, Two Bathroom

Riverside - A2

Area: 1004 sqft.
Balcony: 167 + 92 = 259 sqft.

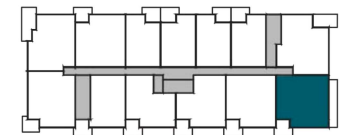


Westside 1



304

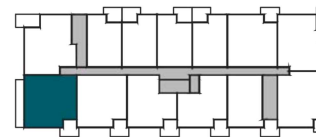
Westside 2



304

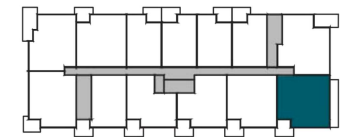
Floor 3

Westside 1



204

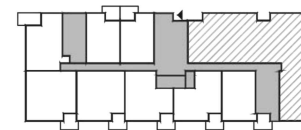
Westside 2



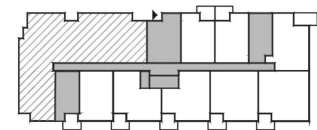
204

Floor 2

Westside 1



Westside 2



Ground Floor

Facing Riverside



Northside Condos



Northside Condos Two Bedroom

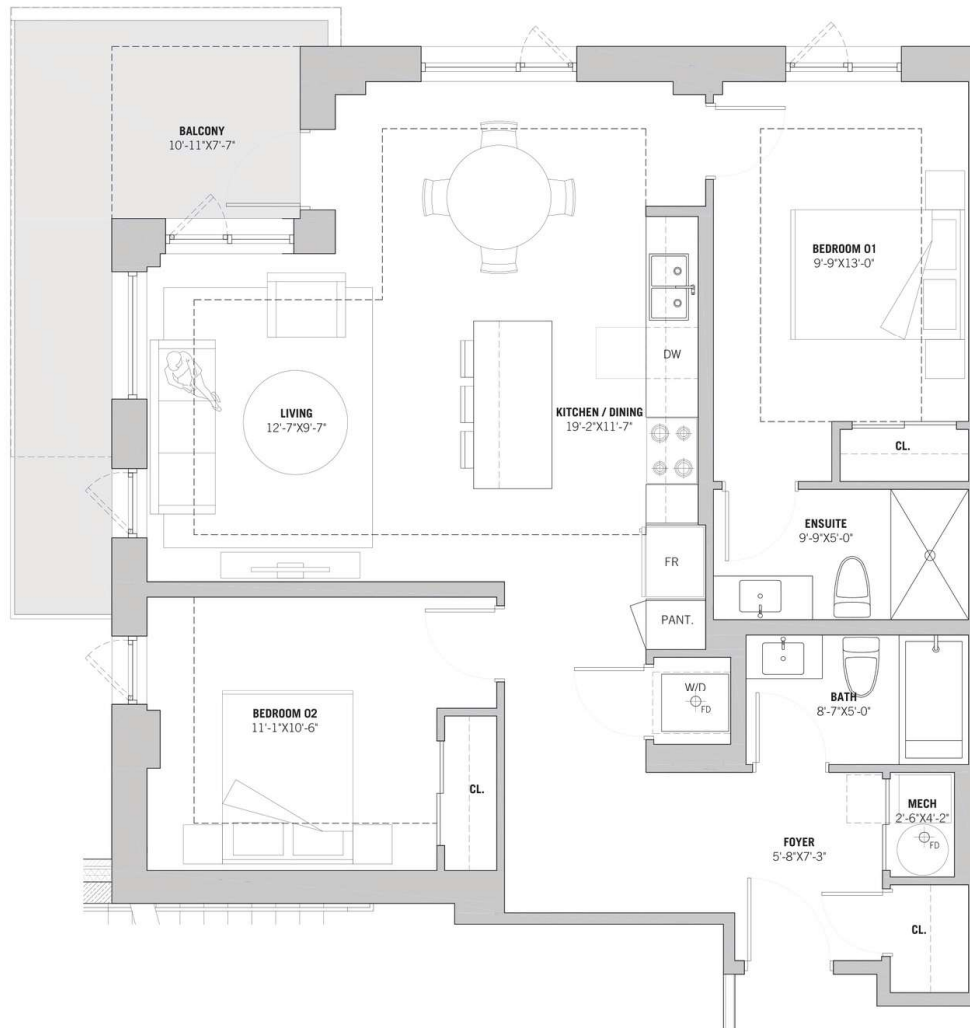


Two Bedroom, Two Bathroom

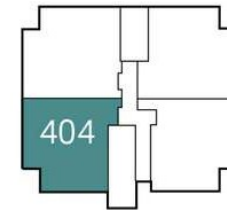
Cove - A

Area: 1,013 sqft.

Balcony: 132 sqft.

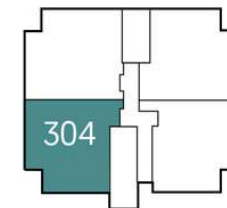


Northside Condos



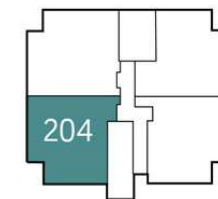
Floor 4

Northside Condos



Floor 3

Northside Condos



Floor 2

◀ Facing Riverside ▶



Southside Condos



Southside Condos One Bedroom

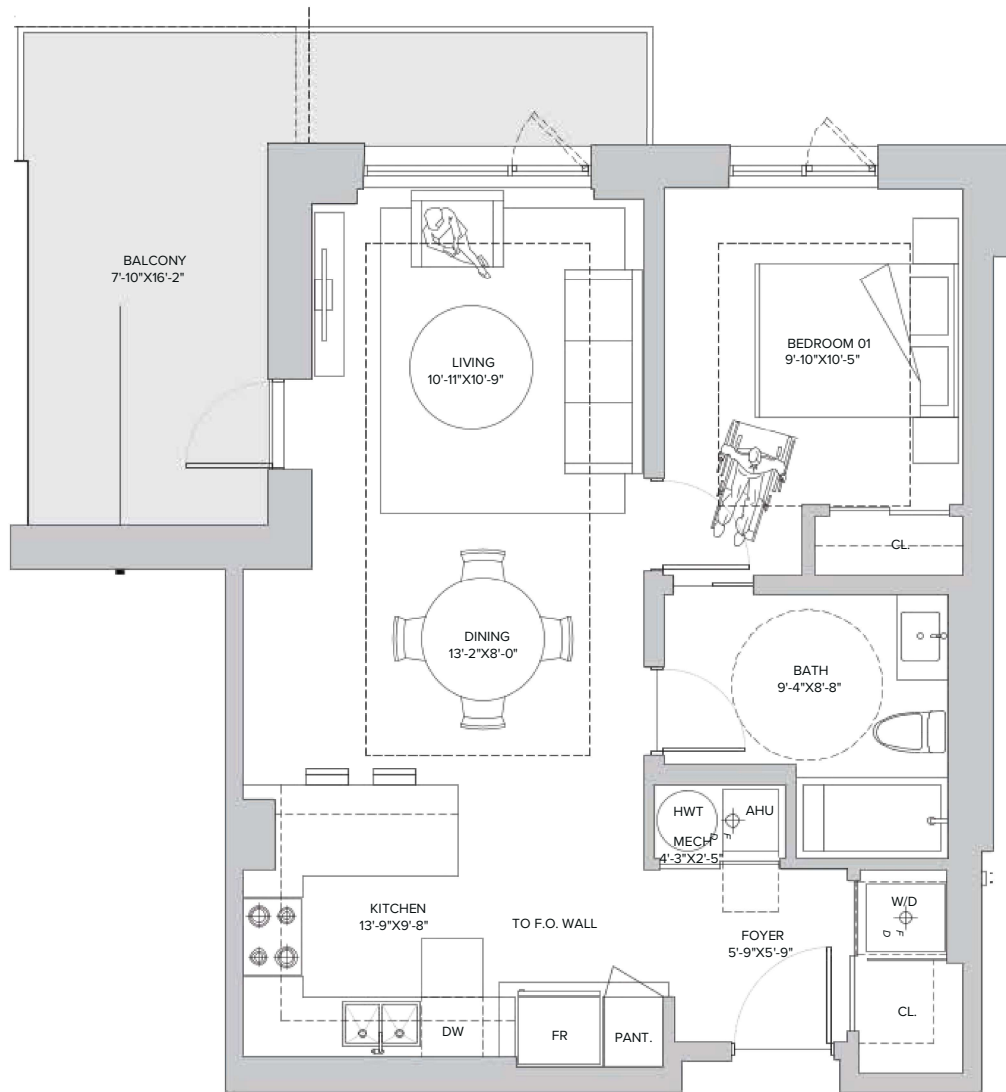


One Bedroom, One Bathroom

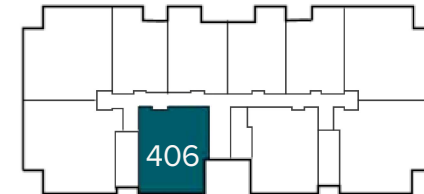
Sandyshore - A | Barrier-Free

Area: 700 sqft.

Balcony: 114 sqft.

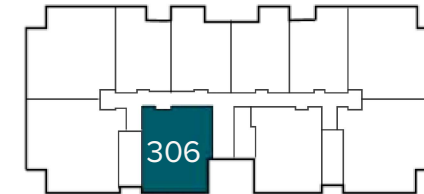


Southside Condos



Floor 4

Southside Condos



Floor 3

Southside Condos



Floor 2

▼ Facing Riverside ▼



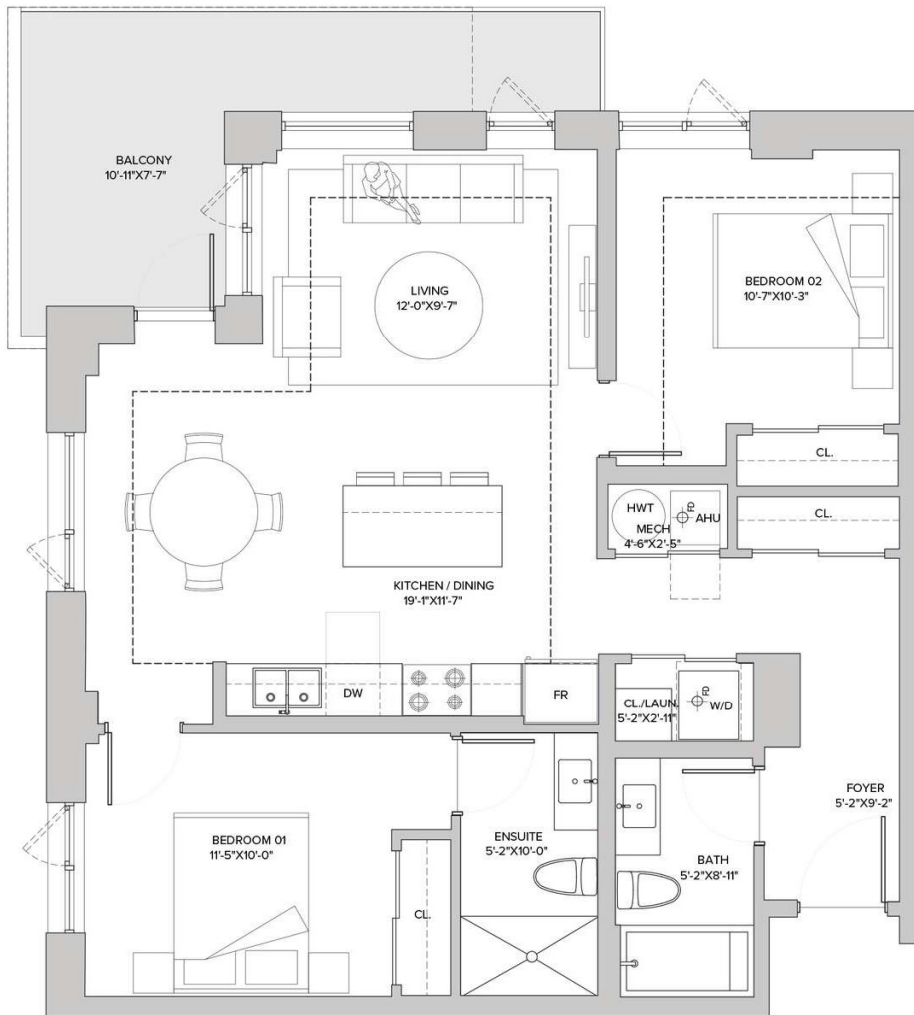
Southside Condos Two Bedroom

Two Bedroom, Two Bathroom

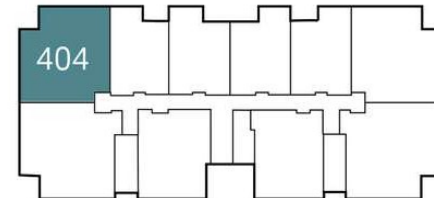
Waterdale B

Area: 954 sqft.

Balcony: 125 sqft.

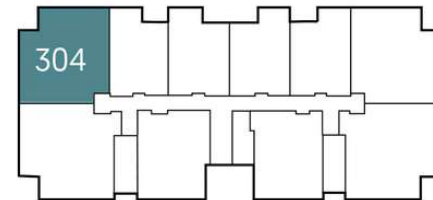


Southside Condos



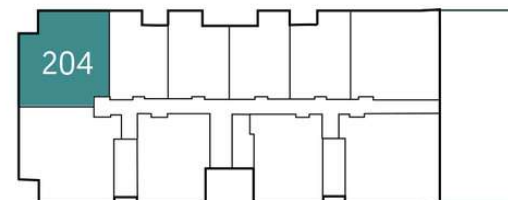
Floor 4

Southside Condos



Floor 3

Southside Condos



Floor 2

▼ Facing Riverside ▼



Townhouses

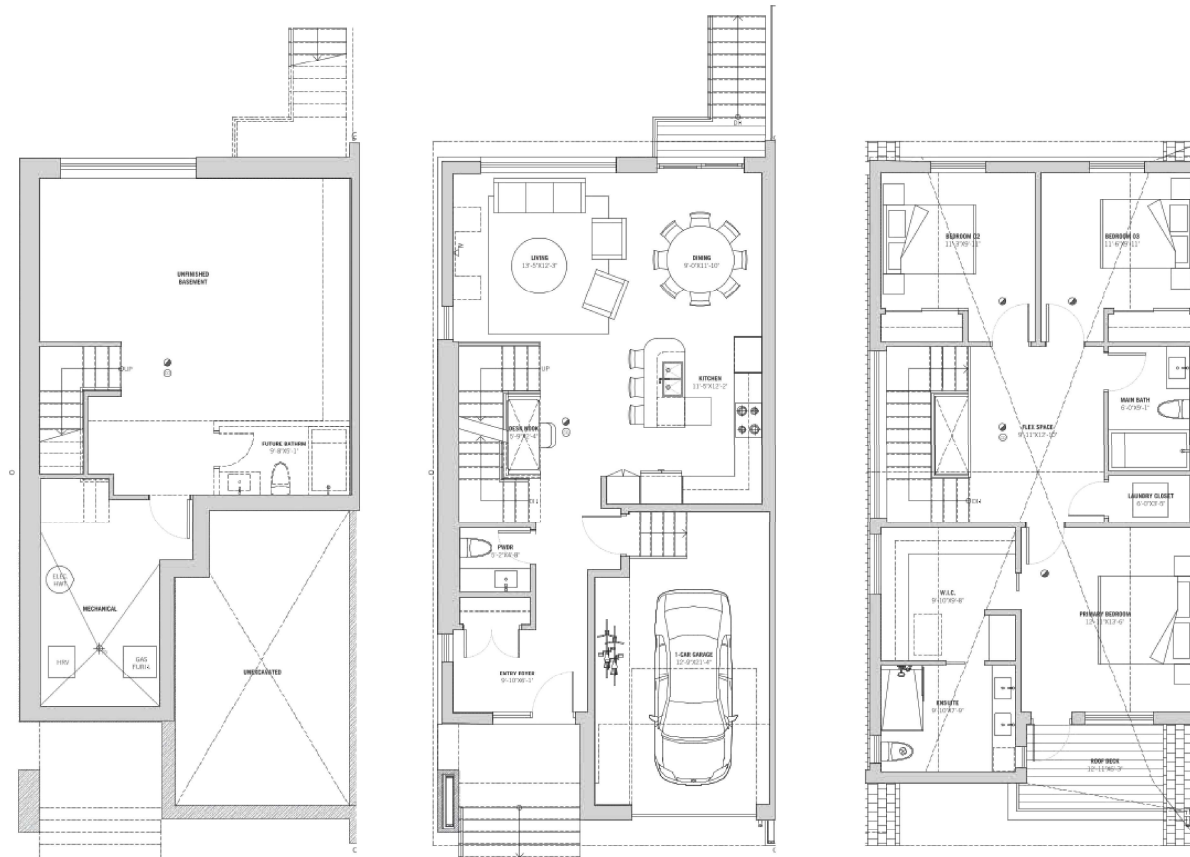


Townhouses A1-A2

Three Bedroom, 2.5 Bathroom

End Unit A1 - A2

Area: *1,757 sqft.

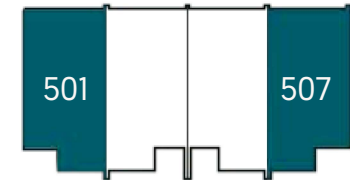


Basement - 716 ft2

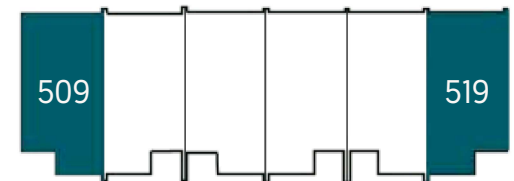
Main Level - 763 ft2

Upper Level - 994 ft2

A1 Townhomes



A2 Townhomes

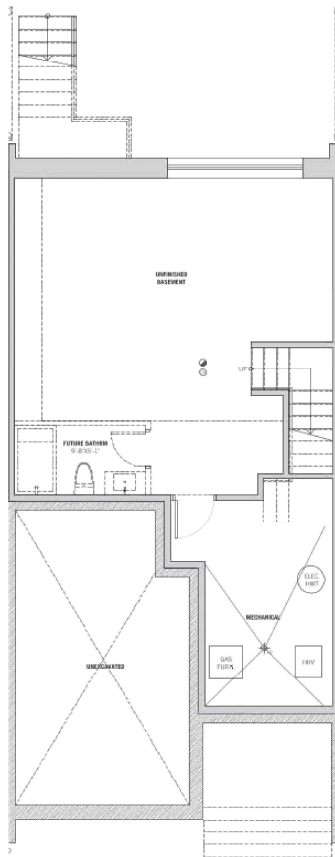


 **Riverside**

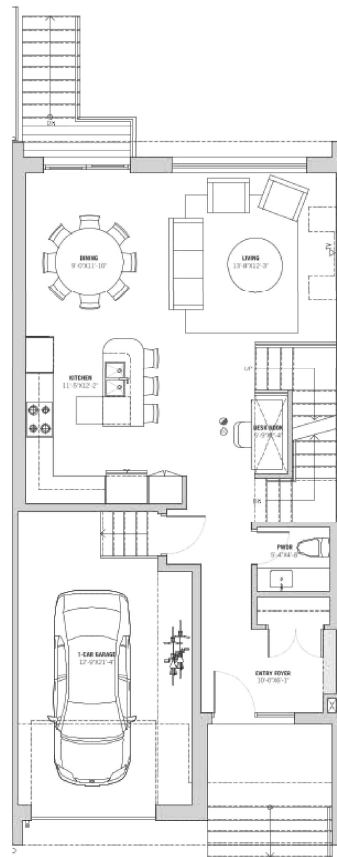
Three Bedroom, 2.5 Bathroom

Interior Unit A1 - A2

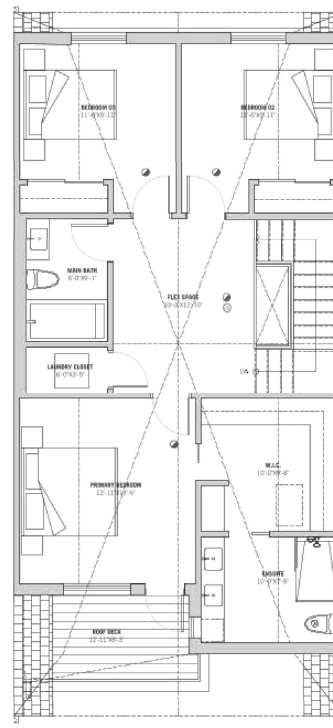
Area: *1,757 sqft.



Basement - 716 ft²

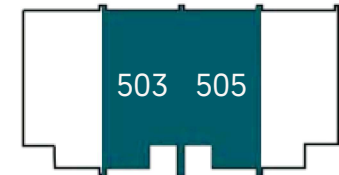


Main Level - 763 ft²



Upper Level - 994 ft²

A1 Townhomes



A2 Townhomes



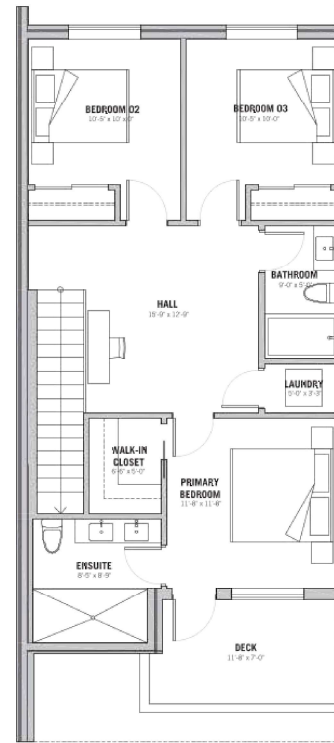
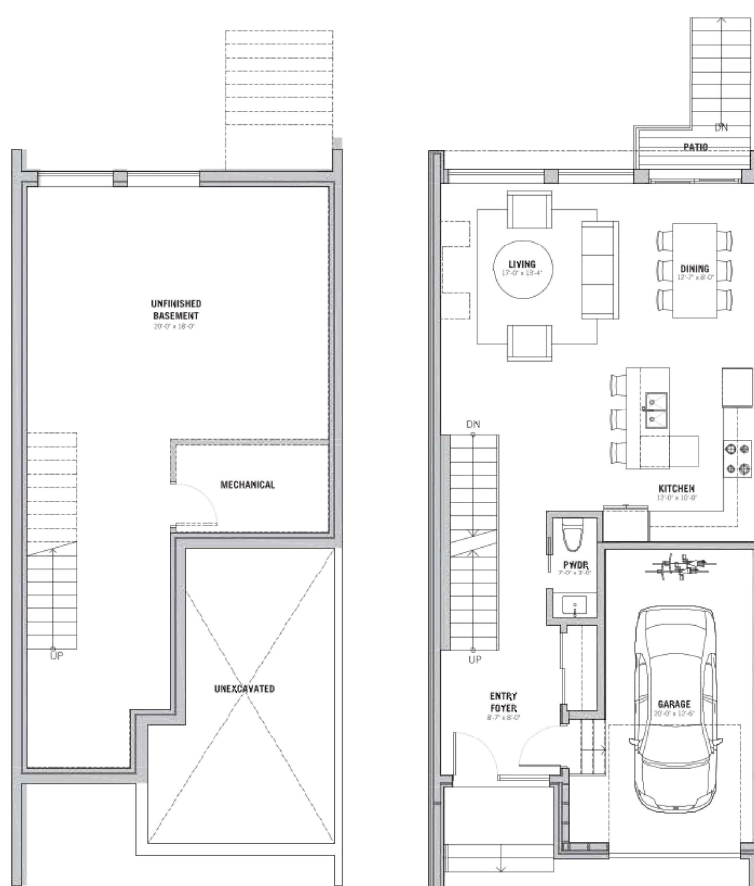


Townhouses
A3-A4

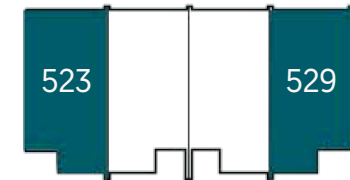
Three Bedroom, 2.5 Bathroom

End Unit A3 - A4

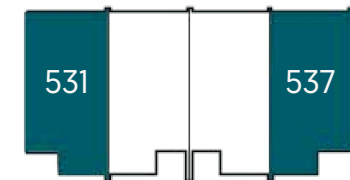
Area: *1,620 sqft.



A3 Townhomes



A4 Townhomes

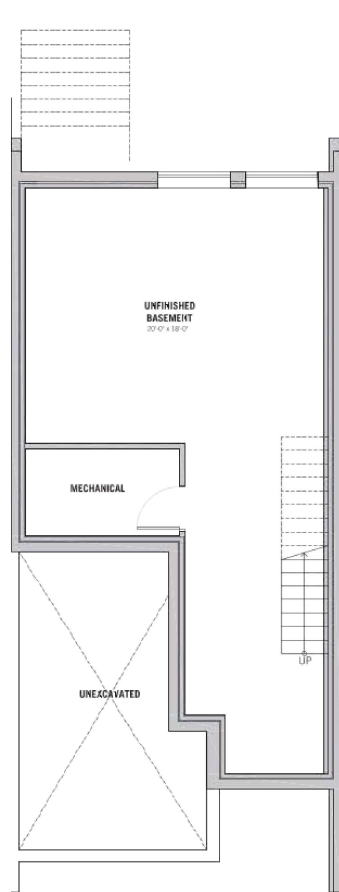


 Riverside

Three Bedroom, 2.5 Bathroom

Interior Unit A3 - A4

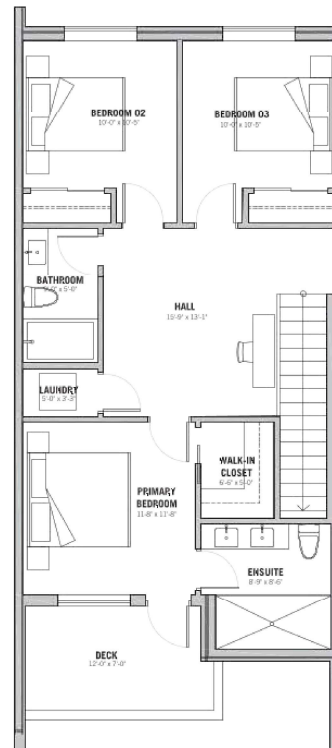
Area: *1,612 sqft.



Basement - 685 ft2

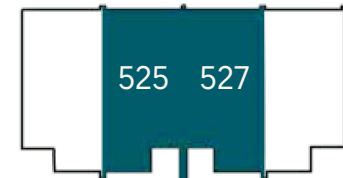


Main Level - 731 ft2



Upper Level - 881 ft2

A3 Townhomes



A4 Townhomes

